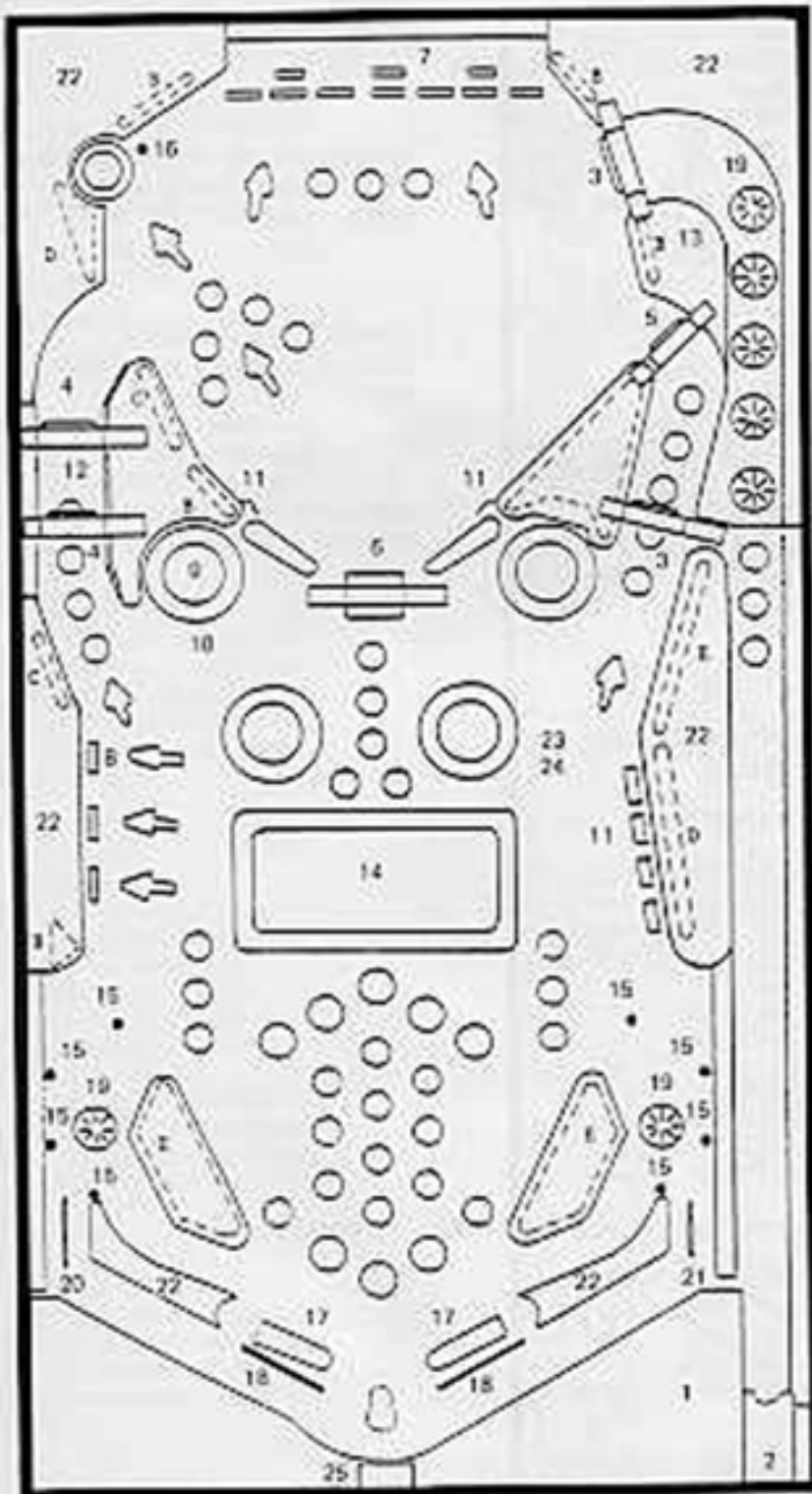




BACKGLASS  
G-440-10

WHEN ORDERING PART, SPECIFY PART NO. AND NAME OF GAME

# MEDUSA



## RUBBER PARTS

Dimensions are inside diameters. Numbers in parentheses indicate quantity used, if in excess of one.

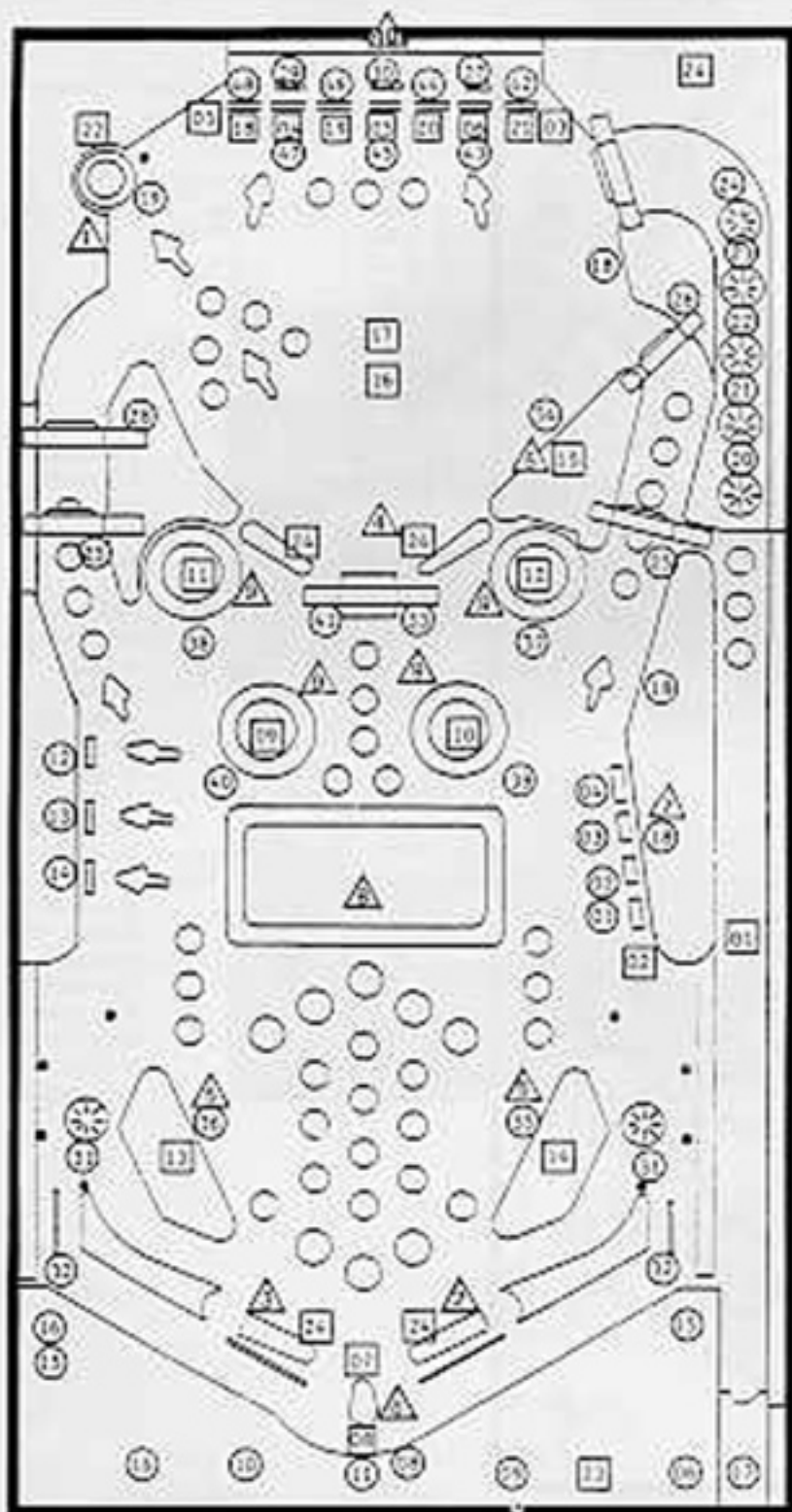
A. R-521	3/4" Dia.	(2)
B. R-521-1	1" Dia.	(16)
C. R-521-2	1-1/2" Dia.	
D. R-521-3	2" Dia.	(2)
E. R-521-4	2-1/2" Dia.	(3)
F. R-521-5	3" Dia.	(11)
G. R-533	Lower Flipper	

## PANEL TOP PARTS

1. Bottom Arch	P-5871-87
2. Shooter Gauge	P-6359-52
3. Gate & Wire Assy.	ASE-2250-24
4. Gate & Wire Assy.	ASE-2250-84
5. Gate & Wire Assy.	ASE-2250-96
6. Spinner Assy.	ASE-2250-96
7. Feature Display Assy.	ASE-3114
8. Target Switch Assy.	ASE-2911-57
9. Bumper Cap	A-4009-6
10. Bumper Collar	C-1010-1
11. Guide Wire	M-121-118
12. Guide Wire	M-121-117
13. Guide Wire	M-121-116
14. Playfield Headout Cover	M-1949-1
15. Minipost & Bumper Assy.	ASE-2836-2
16. Minipost & Bumper Assy.	ASE-2836-3
17. Large Transparent Flipper	A-4017-1
18. Buffer Wire	M-121-53
19. Rollover Button	C-902
20. Wire Actuator	ASE-2806
21. Wire Actuator	ASE-2806-1
22. Screened Plastics	ASE-2030-150
23. Panel	CAS-1128-191
24. Playfield Overlay	M-1787-44
25. Outboard Wire & Bracket	ASE-2806-21

WHEN ORDERING PART,  
SPECIFY PART NO.  
AND NAME OF GAME

#1245 MEDUSA



○ INDICATES SWITCH ASSEMBLY IDENTIFICATION NUMBERS.

NOTE: Cabinet: 15, 16, 17  
Door: 05, 09  
10, 11, 16

□ INDICATES SOLENOID IDENTIFICATION NUMBERS.

NOTE: Door: 23  
Backbox: 24  
Cabinet: 01

△ INDICATES ASSEMBLY IDENTIFICATION NUMBERS.

WHEN ORDERING PART, SPECIFY PART NO. AND NAME OF GAME

